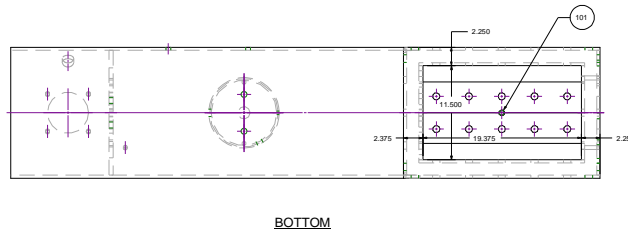
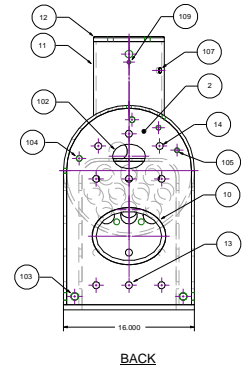
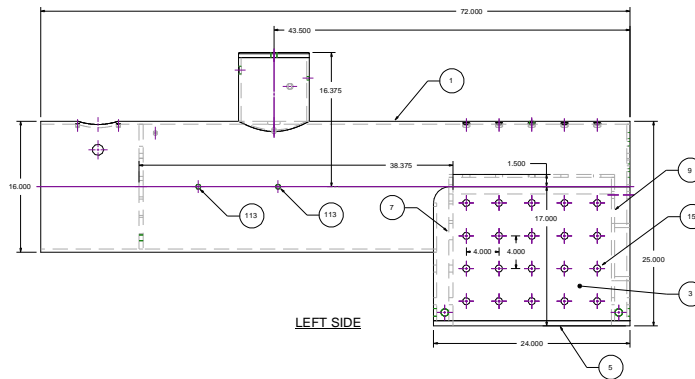
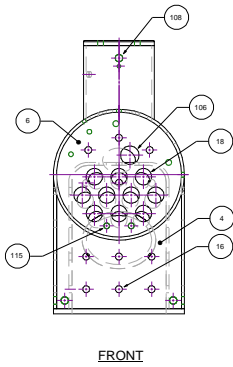
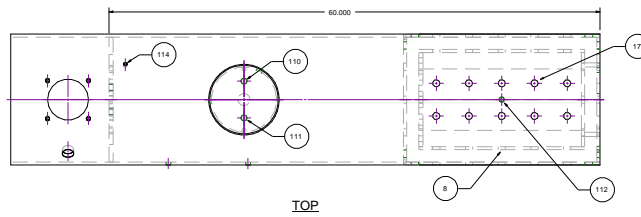


SCHEDULE OF OPENINGS

Item	Qty	Part Name	Description	Material
101	1	Fusible Plug	1/2" NPT Class 3000 Half Coupling	SA105
102	1	Hand Hole	3.000" X 4.000"	
103	6	Washout	3/4" NPT Class 3000 Half Coupling	SA105
104	2	Water Gauge	1/2" NPT Class 3000 Half Coupling	SA105
105	2	Try Cock	3/8" NPT Class 3000 Half Coupling	SA105
106	1	Inspection / Washout	1 1/2" NPT Class 3000 Half Coupling	SA105
107	1	Whistle	1/2" NPT Class 3000 Half Coupling	SA105
108	1	Main Steam Outlet	3/4" NPT Class 3000 Half Coupling	SA105
109	1	Pressure Gauge	1/4" NPT Class 3000 Half Coupling	SA105
110	1	Whistle	1/2" NPT Drilled and Tapped	
111	1	Safety Valve	1/2" NPT Drilled and Tapped	
112	1	Injector Steam Supply	3/8" NPT Class 3000 Half Coupling	SA105
113	2	Feedwater	3/8" NPT Class 3000 Half Coupling	SA105
114	1	Blower Valve	1/4" NPT Class 3000 Half Coupling	SA105
115	2	Washout	1/2" NPT Drilled and Tapped	

BILL OF MATERIAL

Item	Qty	Part Name	Description	Material
1	1	Barrel	16" SCH 30 Seamless Pipe	SA106-B
2	1	Back Head	.375" Plate	SA516-70
3	2	Side Sheet	.375" Plate	SA516-70
4	1	Throat Sheet	.375" Plate	SA516-70
5	1	Mud Ring	.625" Plate	SA516-70
6	1	Front Flue Sheet	.500" Plate	SA516-70
7	1	Rear Flue Sheet	.500" Plate	SA516-70
8	2	Firebox Side Sheet	.375" Plate	SA516-70
9	1	Firebox Rear Sheet	.375" Plate	SA516-70
10	1	Door Ring	2.250" Plate	SA516-70
11	1	Dome	8" SCH 40 Seamless Pipe	SA106-B
12	1	DomeHead	.625" Plate	SA516-70
13	6	Back Stay	.750" x 2.750"	SA36
14	3	Through Stay	.750" x 60.500"	SA36
15	40	Side Stay	.750" x 2.750"	SA36
16	6	Throat Stay	.750" x 2.875"	SA36
17	10	Crown Stay	.750" x 7.125"	SA36
18	10	Tubes	2" O.D. x 11 GA. x 38.75" Approx.	SA178-A



SteamSmith		
SMITH ENGINE NO. 1 BOILER REPLACEMENT GENERAL ARRANGEMENT		
DATE 13-AUG-2007	DWG NO SE1-01	REV A